

KILNINFORD NEWS

Issue 39

April, 2011



Spring 2011

WHAT'S ON in and around Kilmelford & Kilninver

- Friday 22nd April** **Sokobauno Puppet Theatre** perform Circus Invisible at 6 pm in Craignish Village Hall. With puppetry, magic and a live soundtrack, this show is aimed at children aged 4+. Tickets are £4/£3 concessions. Tickets available at www.thebooth.co.uk, Tel: 01852 500376 or email: cvh.arts@btconnect.com
- Friday 22nd April** **Latin/World style acoustic guitar music.** 7.30 pm, Cuilfail Hotel, Kilmelford. Finlay Wells & Sorren MacLean with an evening of highly original, innovative and dynamically performed acoustic guitar music. Tickets £7.50. Tel: 01852 200274
- Fri 22nd –
Mon 25th April** **Easter Fair, Arduaine Gardens** Cadbury Easter Trail
- Sunday 24th April** **Children's games, music and stalls, Arduaine Gardens** 12.30 to 4.30 pm
- Tuesday 26th April** **The Dragon of Krakov** performed by Clive Chandler Collective at 6 pm in Craignish Village Hall. Part of the Puppet Animation Festival, this Polish legend begins with an egg and ends with an explosion. The show is aimed at children aged 8+. Tickets are £4/£3 concessions. Tickets available at www.thebooth.co.uk, Tel: 01852 500376 or email: cvh.arts@btconnect.com
- Saturday April 30th** Craignish Parish Church's **Spring Fayre**, in the **Fire Station, Ardfern**. 11 am. Ishbel McNicol
Tel: 01852 500277
- Friday 6th May** **Coffee Morning** in Kilmelford & Kilninver Village Hall 10.30 am until noon. Offers of home baking much appreciated. Bring & Buy bookstall. Proceeds in aid of Kilmelford Village Hall and Church funds. Contact: Diane Scaife
Tel: 01852 200208

- Sat 7th - Sun 8th May** **Spring Festival, Arduaine Garden** in conjunction with the NTS
- Sunday 8th May** **Childrens' games, music and stalls, Arduaine Gardens** 12.30 - 4.30 pm
- Sunday 29th May** **Family Day Out: "Big Picnic", Arduaine Gardens** 11.30 - 12.30 Multi-faith Ecumenical service; 12.30 - 4.30 Childrens' games, childrens' & wildlife stalls, music, refreshments. Bring your own picnic!
- Thursday 2nd June:** **The New Budapest Cafe Orchestra** 7.30pm in Craignish Village Hall. The Budapest Cafe Orchestra plays powerful and driving folk-based music from Eastern Europe; Hungarian Czaradas, Russian and Ukranian folk songs and dances from Romania and Moldavia. The music evokes vivid images of fiddle maestros, cafe life and gypsy campfires. Tickets £8/£5. Call 01852 500746 to reserve or book online at www.thebooth.co.uk.
- Friday 3rd June** **Coffee Morning** in Kilmelford & Kilninver Village Hall 10.30 am until noon. Offers of home baking much appreciated. Bring & Buy bookstall. Proceeds in aid of Kilmelford Village Hall and Church funds. Contact: Diane Scaife 01852 200208
- Wednesday 29th June** **Mike Maran presents Italia n Caledonia A** warm-hearted look at the legacy of Scots Italians over the years, from the first immigrants, through the tragedies of World War II until the present day, exploring what it means to be Scottish and Italian today. Times and prices to be confirmed. See www.craignishvillagehall.org.uk for further details.
- Friday 8th July** **Coffee Morning** in Kilmelford & Kilninver Village Hall 10.30 am until noon. Offers of home baking much appreciated. Bring & Buy bookstall. Proceeds in aid of Kilmelford Village Hall and Church funds. Contact: Diane Scaife Tel: 01852 200208

- Sat 23rd July – 7th Aug** **Craignish Arts Festival.** A celebration of art in all its forms. More details below.
www.craignishartsfestival.org.uk.
- Wednesday 3rd August** **Summer Music Evening** 7.30 pm in Kilmelford Church. Musicians of all standards and non-musicians welcome. Free entry. Contact: Jim Robb and Winnie Campbell (Tel: 01852 200236)
- Friday 5th August** **Coffee Morning** in Kilmelford & Kilninver Village Hall 10.30 am until noon. Offers of home baking much appreciated. Bring & Buy bookstall. Proceeds in aid of Kilmelford Village Hall and Church funds. Contact: Diane Scaife 01852 200208
- Sunday 7th August** **Summer Festival, Arduaine Gardens** 12.30 - 4.30 Music, crafts, plants and other stalls, children's events, refreshments
- Wednesday 10th August** **Summer Music Evening** 7.30 pm in Kilmelford Church. Musicians of all standards and non-musicians welcome. Free entry. Contact: Jim Robb and Winnie Campbell (Tel: 01852 200236)
- Friday 12th - 15th August.** **Artmap Argyll Open Studio Weekend.**
www.artmapargyll.com. 40 Artists around Argyll open their studios. Your local artists are Pip Weaser, Basketry and Karen Liversedge, Glass, who are jointly opening at Karen's studio, the Old Smithy Studio, Ravenswood, on the Degnish Road Open 10.00am – 5.00pm during the open weekend. See article and advert later on.
- Wednesday 17th August** **Summer Music Evening** 7.30 pm in Kilmelford Church. Musicians of all standards and non-musicians welcome. Free entry. Contact: Jim Robb and Winnie Campbell (Tel: 01852 200236)
- Wednesday 24th August** **Summer Music Evening** 7.30 pm in Kilmelford Church. Musicians of all standards and non-musicians welcome. Free entry. Contact: Jim Robb and Winnie Campbell (Tel: 01852 200236)

Wednesday 31st August Summer Music Evening 7.30 pm in Kilmelford Church. Musicians of all standards and non-musicians welcome. Free entry. Contact: Jim Robb and Winnie Campbell (Tel: 01852 200236)

Mamie Tomison – 100th Birthday celebrations!

Mamie will be celebrating her 100th birthday on 18th May. She has lived in Kilmelford for nearly half of her life and has many friends far and wide.

We would like to invite anyone who has known her over these years to call in and celebrate with us. As the 18th will prove to be a busy afternoon the following two afternoons, 19th and 20th May, will also be open for friends to call in.

Mamie does not wish for any presents but instead would like friends to know that we will have a donation box for the Cherish Fund to support Jean and John Bowman's local charity.

Dorothy and Malcolm Bark

NEW ARDFERN SINGING GROUP: Come and sing your heart out!

Mondays from 7.30 – 9pm: The singing group now meets at Rachel's Shack in Ardfern, and we want to welcome as many new voices as we can. You don't have to be confident, think you can sing well (or at all), or read music, just come along, join in and prepare to be delighted... all the songs are taught by ear, without music, and most of them are short and simple rounds, harmonies and chants. It's 'Singing for Non-Singers' and the aim is just to have fun. We welcome anyone – men, women or young folk – to come along. You'll be amazed at the wonderful sound we make!

Directions to Rachel's: through the village past pub, after church we are the fourth turning on right (first two are driveways, third is a wee road between two houses, fourth is our drive). Turn right into Barfad-Beag - single storey white house with gable end onto road/shore side. Park in our drive or in passing place on the road. Shack is past conservatory, follow path then stepping stones, then boards over muddy garden to second shack.

I look forward to seeing you there! Jane Wilding

ART GROUP

The group meets **weekly on Thursdays** from 2 pm – 4.30 pm in the small hall in Kilmelford. All welcome. £1.50 per session. Contact: Agnes McColl
Tel: 01852 200365

Artmap Argyll - Artists open their studios.....

Artmap Argyll provides a unique opportunity, to visit working artists, makers and designers in their studio spaces or homes - the wellspring of their inspiration...

You will find an extraordinary variety of contemporary and traditional art media on display in painting, sculpture (stone, glass, wood), glass engraving, printmaking, graphic arts, basketry, woodturning, weaving, mixed media and more...

The 2011 brochure and artists directory will serve as both the official guide to this four day open studio event and also as an ongoing resource for contact details throughout the year. Feel free to browse online in advance of your visit; the website will shortly include this year's new members and any change of addresses.

Kilmelford artists include Karen Liversedge, Glass (01852 200727 www.karenliversedge.com) and Pip Weaser, Basketry (01852 200260 www.scottishbasketmakerscircle.org). They will be holding their joint open weekend again at the Old Smithy Studio, Ravenswood, on the Degnish Road. You are invited to see work at the studio and find pathways leading to sculpture in the garden. We look forward to welcoming you to our Kilmelford open studio weekend... a chance to see, buy, commission work or just explore.

Open 12th – 15th August www.artmapargyll.com

Karen Liversedge and Pip Weaser

Art at Lord of the Isles

The Lord of The Isles, renowned for its fresh seafood and hearty pub fare amid stunning scenery, has lots of activities planned for the summer.

From **July 26th** – **August 7th** we are contributing a unique exhibition to the Craignish Arts festival. Entitled “Eat Your Art Out”, invited Argyll artists and craft makers will be exhibiting in the dining and bar spaces.

All are welcome to come and browse and buy a memento inspired by the beauty of the locale, or to dine in an original gallery space, literally eating your “art out”!

West Highland week is a huge fixture on the local calendar and we welcome yachtsman from around the world with live music and the occasional celebrity on Saturday night, the **30th July** - Always a good night.

On Sunday the **31st July** you can shop for Award Winning local produce from 10am in the Lord of The isles Marquee at the Argyll Farmers market and watch the exciting West Highland Week race start at 11.15 am, cheering your favourites as you take in the view from our patio. Booking essential: 01852 500658. Check our website for other events: www.lordoftheisles.com

CHERISH FUND Update

As of Monday, 4th April the fund stands at the fantastic total of £26,928.55. Very many thanks to everyone who supports us at the coffee mornings. For more details please contact: Jean Bowman Tel: 01852 200380

COUNTRY DANCING

After another good season the final session was on the 14th April. Many thanks go once again to Mike Murray for giving lessons with his usual incredible patience and providing such enjoyable sessions. We will recommence in the autumn, look out for details in the September newsletter.

CRAFT GROUP

The craft group meets for sewing, knitting, embroidery and any other handicrafts weekly on **Wednesday mornings from 10 am until 12 noon** in Kilmelford Village Hall. We welcome anyone with an interest in crafts regardless of age or skill level. Come along and join us!

Contact: Dorothy Carmichael Tel: 01852 200374 and Toni Mitchell Tel: 01852 316151

MUSIC NIGHTS IN LOCH MELFORT HOTEL

Every **first** and **third Friday** of each month ceilidh style evenings are held at the Chart Room II at Loch Melfort Hotel. All are welcome, with or without an instrument.

CRAIGNISH ARTS FESTIVAL 2011

The Craignish Arts Festival 2011 will run from **Saturday 23rd July until Sunday 7th August**. Presenting a wide ranging and varied programme, the festival promises to be a feast for all the senses, with something for everyone from across the age spectrum.

We kick off with a Family Fun Day at Kintraw, which will include a dramatic Viking re-enactment, various sports, a BBQ and a producers market showcasing the best of all things local. Over the next fortnight there will be workshops, daily art exhibitions showcasing the work of local artists,

sculpture, geological and archaeological walks, stories, music nights, special sailing and riding events, tailored toddler activities plus many other great events and competitions.

The middle weekend sees the focus move to Craobh with a special producers market and walking theatre coinciding with the start of the West Highland Yachting Week race from Craobh.

The final weekend of the Festival will include the annual Pirate Parade in Ardfern and the closing Sunday will see a Guinness Book of Records attempt for the largest Reel of the 51st ever! For more details visit our website www.craignishartsfestival.org.uk or telephone Jan on 01852 500 689. Do come along and join in!

EXPLORERS

The Easter story “like you’ve never heard it told before” was presented at the Xplorers young people’s Prayz Service on Sunday 3rd April.

The activity time beforehand was taken up with creating puppet figures, cutting out, colouring-in and gluing. The story of the Trial, Crucifixion and Resurrection of Jesus was explained and lively discussions took place in the three groups. The scenes were then enacted as Ken unfolded the complete story during the Prayz Service.

Our thanks to Peter McLardy who accompanied on his guitar for the singing of The Lord of the Dance.

The parents and friends who come and join us for the Prayz Services are especially welcome as the young people and Leaders appreciate being able to share their efforts with the community. The February and March sessions were well attended, with a few less in number on 3rd April due to families being away on holiday.

The next Xplorers will be on Sunday 1st May at Kilmelford Church at 4 p.m. The story of the Sowing of the Seeds will be the theme.

All are very welcome.

MAOLACHY GARDEN OPENING 2011

Planning Garden Open dates on a day when the south-westerlies are driving rain up the glen and all looks grey, windswept and dripping wet is not the easiest of tasks.

But then, during a brief calm, a short wander up the wild garden reveals the scented poplar’s familiar tang to the nose and the brave Lent lilies nodding in the breeze, all helping to bring positive pictures of Spring. Along with the

brilliant greens of Welsh Poppy leaves and with Hemerocallis and Iris spears contrasting with the newly compost-fed borders, prospects look good.

The pied wagtail has arrived in the courtyard and the frogspawn spreads in the pond. Ignore the dreichness. Spring is here.

My Garden Diary for the last three years says early June would be a good time to show people round, so hopefully this will suit those who would like to come up and wander the main paths and/or explore the new route through birch and rowan trees up the side of the burn, or just sit on the terrace with a cuppa.

Maolachy Garden will be open on **Saturday 28th May to Thursday 2nd June** inclusive from 2 – 6 p.m. Tea and Buns £3 for local charities.

Dogs allowed but PLEASE KEEP ON A LEAD.

Georgina Dalton

Easter for Everyone

About 20 years ago I had the opportunity to celebrate Easter in the Romanian city of Iasi where Eastern Orthodox Christianity has shaped the life of the community for centuries. One result of this is that they take the season of Lent very seriously and practically everyone joins in the Lenten fast. Meat, fish and eggs are not to be found in the shops. It is time to live mainly on cabbage.

The flip side of this season of privation is that when it comes to Easter the celebration is really something. People start to gather in the cathedral around 8.30 or 9.00 pm on Easter Saturday. The worship builds up towards the midnight hour which signals the start of Easter Day. The practice which made a big impression on me is that, just at that moment, the clergy lead the entire congregation out of the cathedral on to the city streets. It is there that they make the proclamation that “Jesus Christ is risen from the dead”.

It is a powerful exhibition of the reality that the news of Jesus’ resurrection is not something that can be confined within the walls of the church. It is news for the whole creation since it announces that God’s purpose for our world overcomes even death. It is news for everyone since it offers a matchless hope for our living and for our dying.

We may not have city streets in Kilninver and Kilmelford but the same good news of the resurrection of Jesus Christ is ours to celebrate. Easter is a festival for everyone. The parish church extends a warm welcome to the Holy Week and Easter services detailed below.

Kenneth Ross
Parish Minister

Holy Week and Easter Services

17 April	12 noon	Kilmelford Parish Church	Palm Sunday Service
19 April	7.30 pm	Kilmelford Parish Church	“Faith in a Time of Recession”
21 April	8 pm	Kilbrandon Parish Church	Maundy Thursday Service
22 April	6 pm	Craignish Parish Church	Good Friday Service
24 April	8 am	Kilmelford Parish Church	Easter Communion Service
24 April	12 noon	Kilnilver Parish Church	Easter Day Service

CHURCH OF SCOTLAND SERVICES

We hold church services every alternate Sunday in **Kilmelford** and **Kilnilver** Parish Churches to which all are welcome. Services are held at 12 noon.

Dates for 2011

Services are at 12 noon unless stated otherwise.

	Kilmelford	Kilnilver
April	3 rd , 17 th	10 th
	24 th Communion 8am	24 th Easter Day
May	1 st , 15 th	8 th , 22 nd
	29 th May Arduaine Gardens, United Parish Service 12 noon	
June	12th, 26th Communion	5th, 19th
July	10th, 24th	3 rd , 17 th
	31 st July Kilchattan Church, United Parish Service 11.30 am	
August	7 th , 21 st	14 th , 28 th
September	4 th , 18 th	11 th , 25 th
October	2 nd , 16 th	9 th , 23 rd
	30 th Oct Kilbrandon Church, United Parish Service 11.30 am	
November	13 th Remembrance	6 th Communion
	27 th	20 th
December	11 th , 25 th	4 th , 18 th

Kilmelford Church is in the middle of the village and the car park is behind the church.

Kilniver Church is half a mile off the A816 road to Oban. Take the turning to Easdale. You can park on the roadside.

Every Sunday there is a service of worship at Craignish Parish Church, Ardfern at 10.15 am.

Times for the United Services and notices for Christmas Services will be posted locally.

SCOTTISH EPISCOPAL CHURCH SERVICES

St John's Cathedral, George Street Oban.

Sunday 8 am Holy Communion
 10.15 am Sung Eucharist (Fourth Sunday – Choral Matins)
 Wednesday 11 am Holy Communion

CATHOLIC CHURCH SERVICES

St Columba's Cathedral, Oban.

Saturday 7 pm Vigil Mass
 Sunday 10.30 am Sunday Mass

KILMELFORD & KILNIVER VILLAGE HALL CHARGES

DAY TIME USE	LESSER HALL	MAIN HALL
Charity Fund Raisers	£1.50 per hour	£3.00 per hour
Social use other than charities	£3.00 per hour	£6.00 per hour
Commercial use	£6.00 per hour +£25*	£12.00 per hr + £25*

* The £25.00 charge is for the Caretaker to set up the tables & chairs beforehand, and clear up afterwards.

Above charges include kitchen power and use of equipment for light refreshments and drink preparation only.

Additional use of kitchen cooking facilities for preparation of hot food is **£10.00** per event.

All bookings to be made at Kilmelford Village Stores Tel: 01852 200271

SPORTS

Squash: 16 years and over £4.00 per hour
Under 16 years, OAPs, students and unemployed
£2.00 per hour
Badminton: £3.00 per hour all categories
Junior Football: £3.00 per hour
Indoor Tennis: £3.00 per hour

HIRE CHARGES

Hall Caretaker - Colin Gibson Tel: 07825 987 696

EVENING DANCES & FUNCTIONS	5 pm until 11 pm (1 am for dances)
Charity	£65.00 per session Deposit £20.00
Private	£65.00 per session Deposit £20.00
Commercial	£90.00 per session Deposit £50.00

Above charges include kitchen power and use of equipment for food and refreshment preparation

After use the Hall must be left clean and tidy. Failure to do this will lead to a further charge of £50.00

HIRE OF EQUIPMENT

Residents of Kilmelford, Kilninver and Arduaine may hire equipment, and by special arrangement those resident outside the area.

Tables £2.00 per day. Chairs £1.00 per day. Prices of cutlery and crockery on request.

A full list of rates and availability can be obtained from the Hall Caretaker.

Hire is subject to a minimum charge of £10.00

Heating cards for Main & Lesser Halls - £1.50 each

KILNINVER AND KILMELFORD COMMUNITY COUNCIL

Minutes – 14th December 2010

The meeting of the above council was held on Tuesday 14th December 2010 at Kilmelford Village Hall.

Present: Nigel Mitchell (NM) Chairman, Antoinette Mitchell (AM), Sarah Edwards (SE), Matthew Anderson (MA), Colin Clark (CC), Sheila Whitlow (SW).

Also in attendance were Laura MacDonald, Community Development Officer and 9 members of the public.

- **Apologies:** Councillor Elaine Robertson, Councillor Neil Mackay, Councillor Donald Macdonald, John Maclean.
- **Minutes of Previous Meetings:** The draft minutes of the AGM held on 12th October 2010 were deemed to be an accurate representation of the meeting (the minutes are to be considered for approval at next AGM). Proposed AM, Seconded MA.

The minutes of the ordinary meeting held on 12th October 2010 were taken as a true and accurate representation of that meeting and approved. Proposed AM, Seconded MA.

- **Matters arising from previous meeting:**
 - a) **Raera Wind Farm** – The PPSL voted unanimously with the planners at the meeting on the 14th December to refuse the Rera Wind Farm application. Georgina Dalton and the members of the community present at the meeting thanked Toni and Nigel Mitchell for the huge amount of work they had undertaken with regard to the meeting and their fair and open approach. Any further developments would only arise if there was an appeal.
 - b) **Land Around the Village Hall** – NM referred to articles recently printed in the Oban times which appeared to suggest that Mr Tilly notified the community council that he plans to submit an application in accordance with the views of the community council. NM contacted the Oban Times and a retraction was printed the following week. No other developments are now likely for twelve months. NM would like some indication of the community view with regard to this matter.
 - c) **Clachan Wind Farm** – There is no application at the moment. Rory Young may put in an application in the New Year. All three Community Councils involved had a meeting and all three have sent a

letter. The community would not be interested in owning a turbine or in a co-operative. If the plan were to go through there should be a community benefit. NM will be taking on board the views of Clachan Seil and Easdale Luing Community Councils' views. It was felt that many of the points raised in the Raera Wind Farm meeting are relevant to other developments and there are many comments on the website so far regarding this issue.

- d) **Kilmelford Notice Board** – NM has spoken to Alistair Oates who is quite happy for the notice board to be replaced. Alistair Oates would like prior notification to advise the tenants. A grant from needs to be completed. Laura Macdonald advised that the Village Hall Committee can apply for a grant but not the community council. Quotes for other noticeboards are required to apply for a grant. An application can be made for the two noticeboards in the village and at the village hall with photographs and the application needs to be made by 6th January. The application does not need to be classified.
- e) **Fences Around the Glebe** – There have been no new developments. The issue with the Herries fencing is still with the planners at the moment, and the developers would like to keep it in place. NM will advise the planning department that the community is concerned.
- f) **Trust Fund** – No further developments from the last meeting.

Planning Applications:

1. Marine Panned Fishing Farm in the Seil Sound- EIA Pre Application Consultation for application by Lakeland Marine Farm. This involves repositioning an existing farm, increasing the size and changing from a mussel farm to salmon. There is no application in yet. Concerns have been raised by Seil and Easdale Community Council regarding the location, pollution in an area that is not presently polluted, and the possible effects on wildlife. The area is currently used for recreational use and there are concerns that the width of the navigation channel could be affected.
2. Celtic Sea – Erection of Dwelling House and Permanent Siting of Caravan- pending consideration.
3. Land Northwest of Kames Farmhouse – Erection of agricultural shed, including farm shop and café- pending consideration.
4. Melfort Pier – Felling of two Trees. Application permitted.
5. Land North of Bragleen House, Kilninver – Erection of log cabin/mobile home. Installation of septic tank. Application permitted.

6. Clachan Seil – Temporary erection of 50 metre high Anemometer mast. Permitted for two years.
7. Loch Melfort Hotel – Application Permitted.
8. The Steadings at Kilmelford – 7 Dwelling Houses and 5 Holiday Houses. Water, sewerage and siting of road concerns. The applicants have now reapplied and the application is pending consideration.
9. Erection of 15KW Wind Turbine, Arduaine – Pending consideration.
10. Temporary Anemometer, Clachan – Pending consideration.
11. Kames Farmstead – 6 dwellings pending consideration - Resubmission. There will be a separate water supply. There is no detail for the water supply and the Environmental health department are seeking clarification. Anaerobic Digester Treatment plant. The plans are being reviewed, the community council have written twice in connection with this application.
12. Coach House, Knippoch – Application Permitted.
13. The Glebe, Kilmelford – Erection of dwelling house permitted.
14. Temporary Polytunnels - Kames Farm – 2 separate applications for 2 tunnels.
15. Melfort Pier – Store and Laundry to Staff Accommodation - Application permitted.
16. Arduaine Farm – 19.34 metre Wind Turbine – Pending consideration.
17. Land North of East Kames – 2 Dwelling Houses and 2 Septic Tanks – Reference- 10/020448PPP. Application by Colin Gladstone. Responses by 4th January.

Correspondence

1. NM had received a letter regarding the North Argyll Voluntary Car Scheme asking for the community council to write to Argyll and Bute council regarding budget cuts. The public consultation ends 31st December. Currently there are 57 passengers. The view of those at the meeting was that there is a real need for the service but the cost may be too little and needs to be reviewed. It was agreed that the community council will send a letter supporting the need for the scheme, as bus timetables are not appropriate, and access to bus stops is an issue. The view of the meeting is that consideration should be given to increasing the charge as it may be too low at present.

2. Transerve – Notification that the Connell bridge is to be closed from the 17th January for 5 nights from midnight till 6 in the morning for maintenance work.
3. Julie Mcleish from Strathclyde Police regarding drinking in Oban. The police are trying to get restrictions for drinking in public increased to the whole of Oban and the area out to Dalmally as they have little control of certain areas outside of the current restricted areas.
4. Community planning – NM attended the second Forward together meeting at Oban High School . The meeting concerned budgets and how cuts can be made and where the community want them to be made. Those attending were in four different groups and the matter is to be discussed further at the next meeting. Feedback is available on the council website.
5. NM had received a letter from Ian McTavish asking the community council to write to request extra grit bins and the refilling of existing bins. NM will send a letter to the roads department.

Correspondence on the table was pointed out including news releases from Argyll and Bute Council regarding the election of councillors.

Any other competent business:

1. Community Engagement Meeting – 20th December- CC, AM and NM will attend.
2. Laura Macdonald the Community Development Officer for Oban, Lorn and the Isles introduced herself. Laura is based in Oban and new to the post. Laura is keen to meet with community councils and will keep in contact with the council. Laura is involved with third sector grants for community groups and the 3rd sector grant scheme. Argyll Voluntary Action is still there and the community development department will work with them.
3. Concerns were expressed regarding the lack of accurate information when roads are closed in the area. NM will raise the issue of communication when there is a road closure with Jeremy Moore, the Community Policeman.

Date of Next Meeting:

The next meeting of Kilninver and Kilmelford Community Council will be held in the Kilmelford Village Hall on Tuesday 8th February at 8pm.

There being no further business the Chairman closed the meeting at 9.24pm.

KILNINVER AND KILMELFORD COMMUNITY COUNCIL

DRAFT Minutes – 8th February 2011

The meeting of the above council was held on Tuesday 8th February 2011 at Kilmelford Village Hall.

Present: Nigel Mitchell (NM) Chairman, Antoinette Mitchell (AM), Colin Clark (CC), Sheila Whitlow (SW).

Also in attendance were Councillor Elaine Robertson, Councillor Neil Mackay, Councillor Duncan MacIntyre and 19 members of the public.

- **Apologies:** Matthew Anderson, Sarah Edwards, John MacLean, Councillor Donald MacDonald.
- **Minutes of the previous meeting:** The minutes of the meeting held on 14th December 2010 were taken as a true and accurate representation of the meeting and approved. Proposed AM, seconded CC.
- **Matters arising from previous meeting:**
 - a) **Raera Wind Farm:** There is no news of an appeal. An appeal would need to be made within three months of the date of determination, which was the 14th December.
 - b) **Clachan Wind Farm:** NM had contacted Rory Young. The planning application is currently being finalised with a view to completion in four to six weeks. A drop in session is planned in February and Rory Young has a meeting with the planning department on site in early March.
 - c) **Kilmelford Notice Board:** The application for a grant for the notice boards at the shop and the village hall is being considered at a meeting on 9th February. 50% of the grant will be for the C.C. Noticeboard near the shop. The Community Council will pay 50% of the cost to K.K.C.A. for the village hall notice board.
 - d) **Fences around the Glebe:** The wooden fencing around The Glebe has been completed. The Herries fencing is due to be considered at a meeting on 9th February.
 - e) **Setting up a Trust fund:** There is no update on the trust fund. Mr Ewan Kennedy Offered to discuss the setting up of a trust fund with Matthew Anderson.

Planning Applications:

1. New Application for the change from a bungalow to a larger dwelling at Ethie. No concerns were raised.
2. Kames Farmstead – A bore hole is to be drilled. Polytunnels have been put up, as temporary accommodation for Alpacas and Merino sheep (160 head of livestock) and there has been quite a lot of work on site in the last two weeks. Jane Rentoul raised concerns regarding the private water supply. Will water to the bore hole impinge on the existing supply? A survey is believed to have been carried out. The existing water pipe crosses the land for development. During the preparation of the land, the pipe was damaged. The development is due to be discussed at a planning meeting on 16th February. The monitoring of the water table was discussed. NM enquired whether the community council could write on behalf of the community, for consideration at the meeting on the 17th February. AM agreed to write to David Love. The access to the pipe and the countryside access path is to be raised with Douglas Grierson, the Access Officer. The path has been used for 40 years and is on the core paths map. New access has been organised for the Forestry Commission and agreed with Colin. This is still going through the legal process.
3. Kames – Two houses are now replacing the 6 houses on a previous application. The paved and tarmacked access off the main road would not seem to be economically sensible for 2 houses. 6 houses were originally denied for the environmentally sensitive land. The water pipe goes straight across the land where garages and a house are being built. As a commercial business, reverse bad neighbours applies for one or six houses. Paul Reynolds the Environmental Health Officer has been involved with this issue and a report was against the 6 houses.

Letters against the first application do not apply to the second application. The first application was withdrawn. The first application was from a limited company and the second from an individual. It is understood that no fee has been paid for the second application.

Fergus Gillanders commented that there has been considerable development over a relatively short space of time in the last five years.

There are concerns that the community is going to be swamped with new developments, considering the other planning consents that have already been granted in Kilmelford.

Before an application can be validated it is understood that a fee has to be paid. In this instance it appears that the planning officer has acceded to plans being accepted without a fee. If it is a continuation of the original application, then letters against the first application should stand.

4. Marine Fish Farm - Ardmaddy – This is still not an application. Opinion is that the area is far too shallow and there may be issues with pollution and recreational use in that area. The application would not come under the scope of Easdale Community Council.

Correspondence

1. NM had spoken to Insp Julie Mcleish at Oban Police regarding the situation with road closures. Julie suggested checking with the Traffic Scotland website and if anyone was concerned they should ask to be connected to the Oban Office for updates.
2. A letter had been received regarding concerns about grit supplies to grit the area of the Degnish road for the area up to the fire station.
3. An email had been received from Sarah Edwards, with her apologies for being unable to attend the meeting. Sarah expressed concern that the summary made regarding the Raera Wind farm, was one sided and only aired the views of those against the wind farm.

Fiona Wylie read her letter regarding the Wind Farm presentation. Fiona did not feel that the presentation reflected the overall views of the community, and raised concerns regarding the code of conduct for Community Councillors.

AM explained that the presentation was, as directed by A&B Council, based on a letter sent to planning in February which had been sent to all the members of the community council prior to this for their comments. From the K.K area there had been four letters in favour of the application and over 40 against. Fiona suggested that objectors were more likely to write than those in favour of the plan. The incomplete phone poll had been taken before the application went in

and Fiona felt that another poll should have been taken after the application was made.

Fiona felt there was a duty to establish and reflect the views of the community as a whole and wanted to discuss how any contentious issues are approached in the future. Fiona referred to the guidance from the Association of Scottish Community Councils, which indicated that word of mouth should not be relied upon.

It was suggested that in future a postal questionnaire, contributions to a website and a suggestion mailbox could be considered.

Fergus Gillanders felt that the presentation by the Wind Farm applicants was not good.

Neil Mackay explained that everybody in the community can make a comment and that all letters and comments would be taken into account and considered.

Duncan Macintyre felt that this community council, as a Statutory Consultee should generally be complimented on their responses.

Luing Community council had not given their opinion.

NM felt that the Representation was appropriate and democratically represented the feelings of the Kilninver and Kilmelford Community. He added that he had received countless phone calls of an evening prior to the Hearing and not one of those had been in support of the project. AM pointed out that the Representation never mentioned OBJECTIONS but flagged up the many concerns the community had about the whole project, none of which N'power had addressed satisfactorily. NM went on to say that a few days prior to the Hearing N'power had directly lobbied the PPSL Committee, by-passing the Planners, directing the PPSL committee to approve Raera as the views and concerns of the community were irrelevant! NM had given his personal opinion as part of the process, but had listened to other views and felt that both the original letter and the Representation fairly represented the majority views of the community. NM accepted responsibility and if anyone would like to make a complaint they should raise their concerns with him.

Elaine Robertson commended this community council for their

approach and the attempts made to garner public opinion.

Jane Rentoul commended NM and AM for their involvement.

4. Elaine Robertson explained that the next elections for Community Councils will be held in the summer after the elections in May.
5. Core Paths- showed the Meeting the core paths plan for paths for this area and explained that a CD rom of the plan is available. There is an address search tab when trying to establish where core paths are.
There is a drop in session on the 9th March at 7.30pm at Oban Library, and the consultation will end at the end of April 2011.

Any other business

1. Fergus Gillanders mentioned the significant amount of rubbish on the beach at Craigmoull Bay, with some very large items including a large floating platform. AM suggested contacting Diane Scaife to find out more about beach clean details. Stuart Cannon offered to take a boat out from the fish farm to help with the collection. Duncan MacIntyre explained that the council could arrange a special rate for one special collection and uplift of the rubbish.
2. Road repairs- Duncan MacIntyre explained that complaints about particularly dangerous pot holes should be made to the council. At a recent meeting the decision was taken to repair Category one pot holes. In March and April there will be a concentrated effort to complete proper repairs. From May to the end of July money from the new budget will be used for a concentrated road repairs programme. NM suggested reporting serious potholes to the website.
3. Municipal Building- This is due to be re-opened shortly and will be a one stop centre.
4. Road Signs for the village- Concerns were raised regarding missing road signs in the village. Peter will give a list to Colin Clark.
5. Ewan Kennedy Wanted to confirm that any future decisions regarding the land around the village hall would be discussed at the appropriate time. NM had spoken to Fergus Murray to explain the views towards the application. They have agreed that nothing will go through without the community council having the opportunity to discuss it. It is believed that some of the community along the Degnish road are very much against the

application. NM invited opinions from those for and against it. The cairn was put forward as of archaeological significance.

6. Fiona Wylie explained that there may not be an April Newsletter as Fiona is away.
7. The Voluntary Car Scheme- Duncan MacIntyre thanked this Community Council for writing. Dalmally and Taynuilt Community Councils had also written and the scheme is to be considered at a meeting on 10th February.

Date of the Next meeting

The next meeting of Kilninver and Kilmelford Community Council will be held in the Kilmelford Village Hall on Tuesday 12th April at 8.00pm.

There being no further business the meeting was closed at 9.34pm.

KILNINVER PRIMARY SCHOOL TERM AND HOLIDAY DATES

18 April 2011	School re-opens for Summer Term
21 April 2011	School closes for Easter Weekend
26 April 2011	Closed for in-service day
27 April 2011	School re-opens after Easter
29 April 2011	School closes for Royal Wedding
03 May 2011	School re-opens
30 June 2011	School closes for Summer Holidays!

NEWS FROM ARDUAIN GARDEN

February 2011: Well, winter has moved on but not as far as I would like it to! We've just felled a larch tree high up in the woodland in order to turn it into 3" planks with our portable sawmill to repair the bridge by the Top Pond. To buy timber of that thickness would be an expensive process, but this way it's just time-consuming! So when you walk across the new bridge beside our old specimen of *Rhododendron barbatum* you'll be able to see a structure made largely from home-grown materials.

Although we've been through a miserable few days there are a number of plants in flower, particularly snowdrops, of course! For several years we've participated in the Scottish Snowdrop Festival, which was initiated by Catherine Erskine at Cambo, in Fife. Although we don't have the acres of

snowdrops that they do, we do have quite a few, and every March we are buying more and dividing our own, to improve the display year by year.

Visitors this year will notice a change at the junction of the Glen and the Road to the Sea. We've had to take down – or to be accurate, we've had taken down – three trees here. Firstly the large shrubby *Griselinia littoralis* which has been bothering me for some years. Several longitudinal splits had made this a safety issue and it had to go. Secondly, the large fir which stood on the corner of the Glen; the top died some while back and it was getting gradually worse. Thirdly and most difficult, the large old *Acer macrophyllum*, the big leaf maple from NW USA. This lovely tree had a couple of large, rotting cavities and yet again was a concern in safety terms. I've heard concern expressed that we're removing too many large trees from the garden, but when safety is at stake we can only accept it and make sure that we plant replacements.

The growing season is now rapidly approaching, but before we get busy with beds and borders we still have many winter tasks to complete. We're just finishing a timber walkway between buildings in the works yard, first put down in 1996 and now rotting. Every year, and this is no exception, we need to replace some of the barriers on bridges and more particularly, on the Cliff Path, where a broken barrier could compromise visitor safety. Then we have to complete the regular collection of brash which showers down from the larch canopy every time the wind blows; we usually burn it up there to save transporting it down to our regular bonfire site in the yard.

One of the final tasks of the winter is the regravelling of the paths. However careful we are, raking and blowing leaves removes some of the pea-gravel and winter rain takes it a little further. For some years now we've been removing gravel from one site – Kilmartin Quarry – and spreading it over another site – Arduaine Garden!

As always, I'd be delighted to hear from you should you have any comments, offers of help, suggestions or questions. I'm always at mwilkins@nts.org.uk or tel: 0844 493 2216. *Maurice Wilkins*

ARDUAINÉ GARDEN SUPPORT GROUP

This time of year always seems to be the calm before the storm, and a lot of the Group's efforts have been put into planning this year's events in the Garden (see 'What's On' listings at the front of this newsletter).

We all hope you can come to at least one of these – but I know you don't need an excuse to visit the Garden!

I should like to thank all of you who I notified who renewed your membership – that is most of you! Anyone who has forgotten, it is still £10 for family and £5 for individual. At present we are going to make a donation to the Garden to purchase snowdrops – there are many in the Garden, but rather spread out in the 20 or so acres, so Maurice will identify areas to make more of a splash with them.

We look forward to seeing you at the gardens.

Rick Potter, Secretary – Arduaine Garden Support Group
arduainegardensupportgroup@googlemail.com Tel: 01852 200 358

USEFUL INFORMATION

EASDALE MEDICAL PRACTICE

Normal working hours for phone calls are 8 a.m. – 6 p.m. Monday to Friday. Tel: 01852 300223.

In case of emergency outside normal working hours, dial 999 for an ambulance. For health advice, phone NHS 24 Tel: 0845 24 24 24.

MOBILE BANKING SERVICE

The RBS mobile bank visits the area every Wednesday as follows:

Ardfern, Galley of Lorn car park	11.15 am – 12 noon
Craobh Haven Marina	12.15 pm – 12.45 pm
Cuilfail Hotel, Kilmelford	2.10 pm – 2.15 pm

MOBILE LIBRARY

There is a new timetable in place, following the reorganisation of the mobile library service. It is now in the area on a Tuesday every 4 weeks, as follows:

3 rd May	31 st May	28 th June	26 th July
23 rd August	20 th September	18 th October	15 th November
13 th December	24 th January 2012		

For any queries contact the library in Oban (Tel: 01631 571444).

All times in the following timetable are approximate:

Kilmore Area	10.30 am	Tulloch Farm	2.00 pm
Kilninver	11.30 am	Craobh Haven	3.00 pm
Kilmelford	1.00 pm		

BLOOD DONATION SESSIONS 2010

Tel: 0845 90 90 999

Corran Hall, Oban

Wednesday, 11th May 4 – 7.30 pm

Thursday, 12th May 1.30 – 3.45 pm & 5.15 – 7.30 pm

Community Centre, Manse Brae, Lochgilphead

Wednesday, 29th June 2.30 – 3.45 pm & 5.15 – 7.30 pm

BIRTHS

Ian and Mel would like to thank everyone for all the kind gifts and good wishes for Hamish Bryan Keith McTavish, born on 28th March.

GOLDEN WEDDING

Our congratulations to Ian and Meriel Teigner, Keepers Cottage, Kilninver on their Golden Wedding Anniversary on May 14th. Love and Best Wishes from their friends and neighbours.

LOCAL DIRECTORY

The Local Directory updated in October 2010, is on sale for £1 at Kilmelford Post Office. For queries or changes, contact Georgina Dalton 01866 844212.

UPDATE

David Turner & Anastasia Weiner, Innie House, Kilninford PA34 4UX
Tel: 01852 200225

KILNINFORD NEWS EDITORIAL TEAM

Fiona Wyllie	(Editor)	Tel: 01852 200227 E-mail: mail@fionaw.co.uk
Olwen Goulding	(Treasurer)	Tel: 01852 200377
Georgina Dalton	(Distribution)	Tel: 01866 844212
David Turner	(Advertising)	Tel: 01852 200225 or 07775 720191 Email: david.turner@unit4.com

Local website: www.kilmelford.com

The Kilninford News post box has been removed from Kilmelford Post Office. Any adverts, letters, articles etc. should now be handed in at the counter where they will be kept for us to collect. Alternatively, please send them to the Editor, in plenty of time for the next issue.

The team is very grateful to all those who kindly help with the distribution of the newsletter.

ADVERTS

Advertising rates:	Private ads	£1 each
	Commercial ads	£5 per quarter page

CONGRATULATIONS!

Mamie Tomison

On your 100th Birthday

With love and best wishes from all your friends and
neighbours

Your Community Needs YOU!



Kilninner and Kilmelford Community Council
urgently needs a Secretary and more
Community Council members.

Please contact Nigel on:
01852 316151

A Property J Services

SPECIALISING IN

Ceramic and Natural Stone Wall and Floor Tiling
Kitchen and Bathroom Installation

Painting and Decorating both internal and external
Patios and Paths Laid

Bespoke Sheds, Garages, Workshops
– made to measure and erected

For a Professional Finish to a High Standard

Call Anthony on 07717 825402
Email: anthonybingham@hotmail.co.uk

A service you can rely on, a name you can trust

Locally based, references available

The Quaich Shop & Restaurant

KILMELFORD

www.thequaich.net

email: earth@thequaich.net

tel: 01852 200271

CAFÉ

Home baking, espresso coffee,
Light lunches with imagination
Hot & cold Takeaways available.

10.30 to 4.30 Tues to Sat

SHOP

Home-made cakes & Pies on sale, from fresh local ingredients.
Wild venison, game, local beef, lamb & mutton,
local free range eggs, seafood to order.
General commodities, post office and cash machine
cards & gifts

9 to 5.30 Mon to Sat- 10 to 1 Sun

RESTAURANT

Enjoy an informal & relaxing evening, with good home-made food & service in
our fully licensed restaurant.

Our main menu is posted on the front of the shop, plus daily specials.

Please phone to book your table in advance

Major credit cards accepted

6pm to 9 pm Thurs, Fri & Sat
booking essential

**John Stannard
Contracts**

General Garden
Maintenance

Small Decorating Projects

Tel: 01852 200371

Mobile: 07881881861

E-mail:

john@johnstannardcontracts.co.uk

Massage

Gabby Rogers
DTM.DRSM

*Practising in
Ardfern,
Melfort Club,
Lochgilphead
and Oban.*

Phone: 01852 500223

J.D. PLANT

• Ditching • Landscaping • Site Work • Track Building • Repair



Anything else considered

Mob: 07766 686460

Tel: 01866 844212

**James Dalton, Maolachy House, Lochavich
By Taynult, Argyll PA35 1HJ**



MELFORT VILLAGE

KILMELFORD

Melfort Village is one of the best-kept local secrets! We are situated one and a half miles along the 'Degnish' road nestled in the hills and oak woods at the head of Loch Melfort. We are probably the most successful timeshare operation in Scotland, if not the UK. We have 32 beautifully appointed self-catering cottages in well kept grounds; an excellent restaurant, **The Shower of Herring** (run by John and Jean Bowman); an 11m indoor **swimming pool**; a small but well-equipped **gym; sauna; games rooms; kid's play room**; all-weather **tennis court**; brown trout **fishing**; **putting green; playground; gift shop; gardens** to admire and walk in.

The Melfort Club is the association of **Melfort Village** time-share owners, and was formed in the late 1980's to efficiently run the cottages and grounds. Each time-share owner has a direct say in the way the Village is run, through a professionally qualified Committee elected from the membership.

We have many local 'owners' who have bought a timeshare week at Melfort so that they can enjoy our excellent leisure facilities all year round, plus enjoy a week's holiday at Melfort or worldwide (using an exchange programme).

1. A TIME-SHARE WEEK CAN COST AS LITTLE AS £500!
(This is a one-off payment to own the week for ever)
2. The Annual Maintenance Fees are between £400 - £550.
(dependent on size of cottage)

REMEMBER, MEMBERS ENJOY YEAR-ROUND USE OF THE FACILITIES*.

(*At the Manager's discretion and subject to residents having first priority)

INTERESTED? PLEASE PHONE US ON 01852 200257

or JUST DROP IN FOR A VISIT!

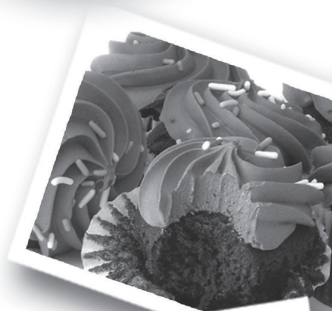
www.melfortvillage.co.uk

Enjoyed your walk?



Enjoy our **SPECIAL OFFER!**

Relax with a
FREE pot of tea
when you buy
a cake....



Just Show your NTS Arduaine Garden
Entrance ticket in the Bistro

1 pot of tea per ticket holder

Offer valid 10.00am-12.00pm and 2.30pm - 5.30pm (1 April - 30 October 2011)

LOCH MELFORT HOTEL **01852 200233** www.chartroom2.com



North Argyll Volunteer Car Scheme

Please! We need more local Drivers to join the Scheme

Helping local people who find it difficult
to get transport to the:
Surgery, Hospital, Dentist,
Visiting friends or Shopping, etc

**Can you spare even a little time,
With your own car?
If so WE NEED YOU!**

We will pay all out of pocket expenses.

Call Margaret Anfield – Co-ordinator

01852 300 368

Leave a message and we'll get back to you.

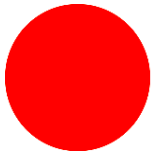
Scottish Charity SCO37509



STAFFORD STREET, OBAN
01631 565952
(opposite the distillery)

Come and try our
delicious
home baking
speciality coffees
light lunches
& wicked puddings

Opening Times
Tuesday - Saturday



Artmap Argyll

Artists Joint Open Studio

Pip Weaser (01852 200260) - Basketry

Karen Liversedge (01852 200727) - Glass

12th - 15th August 2011 10.00am - 5.00pm

The Old Smithy Studio, Ravenswood, Degnish Road.

**An opportunity to see, buy, commission work or just have a nosey...
Karen's studio is at the top of the drive where there is some parking.**

Visitors welcome by appointment outwith open weekend.

www.artmapargyll.com



The Lord Of The Isles

Restaurant & Bar

Craobh Haven Marina

www.lordoftheisles.co.uk

Email: lotinews@aol.com or info@lordoftheisles.co.uk

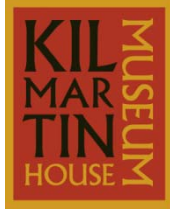
Try our excellent A la Carte Menu, specialising in local seafood or tempt yourself with our Traditional Bar Menu of Fish and Chips, our own 'Loti' Burger or our special Kashmiri Chicken to name but a few.....

*We don't serve fast food we
strive to serve good food as
quickly as we can...*

*Please call 01852 500658 to
reserve your table*



*We serve an Excellent range of Wines & a variety of Beer including
locally brewed Ales*



Programme of Events April to June

Earth Art Exhibition 14th April to 20th May followed by 3 other art exhibitions during summer 2011

A Walk in the Past with Dr Richard Tipping April 20th 6pm

Easter Egg Trail at Dunadd April 22nd from 1pm

Show Scotland Festival of Museums

Sound the Stones on May 14th and 15th as part of the Show Scotland Festival of Museums. Bob Pegg will lead instrument making and playing workshops which will culminate in a performance among the stones in Kilmartin Glen.



Kilmartin House Museum will have a stall at Kilmartin Gala on Saturday 28th May.

Full details of all events are available from Kilmartin House Museum's website www.kilmartin.org or call 01546 510278 for more information.

the Shower of Herring



RESTAURANT & BAR

NEW OPENING HOURS FROM SATURDAY 16TH APRIL

Saturday 3 - 11

Bar, Tea, Coffee and Home-baking 3.00 until 6.00

Dinner served 6.15 until 8.45 (last orders)

Sunday 12.00 - 2.00 also 6.00 - 10.30

Latest orders - Lunch: 1.30 Evening: 8.30

Easy Sunday Menu plus a la carte in the evening

Monday, Wednesday, Thursday and Friday

Open all day

Tea, Coffee, Home-baking, Light Lunches and Snacks

Available 10.30 am until 5.45 pm

Evening meals served from 6.15 with last orders at 8.45

Special Menus on Monday and Wednesday

Tuesday - Closed all day

For menus and information contact us on

01852 200345 or email: jb@showerofherring.co.uk

Copies of our menus are also available to view at the

Melfort Club Office Reception

COME AND JOIN US AT THE CHERISH FUND (OBAN) COFFEE
MORNINGS EACH MONDAY FROM 10.30 UNTIL 12.00 NOON.
TEA, COFFEE AND DELICIOUS HOME-BAKING £2.00 PER PERSON
SALE OF PHOENIX CHARITY CARDS ALSO SECOND HAND BOOKS.

Aiming to provide transport for palliative patients in comfort and dignity